

Close Risk Gaps

While Improving Provider Performance and Engagement

Presented By:

Jimmy Liu, *Vice President, Product Strategy* – **Optum**

Jason Reed, Senior Director of Medicaid Risk Adjustment – **United Healthcare**



THE RISE
ASSOCIATION

Agenda

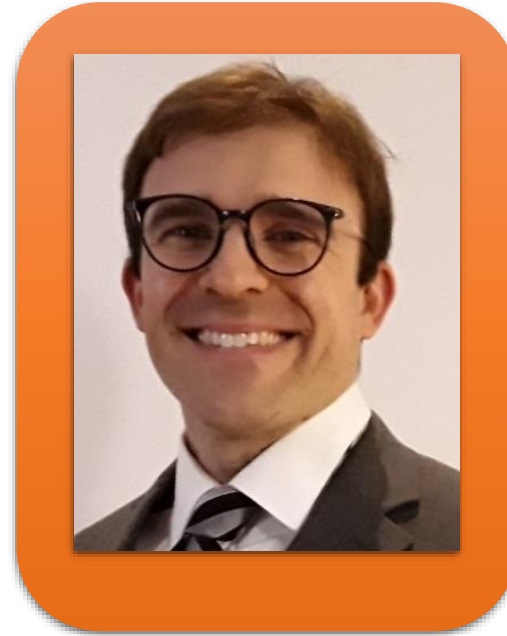
- Introductions
- What is Dx Gap Advisor™?
- How Accurate Coding Improves Risk Scores
- Dx Gap Advisor Impacts All lines of Business
- Medicare and Dx Gap Advisor™
- Medicaid and Dx Gap Advisor™
- ACA and Dx Gap Advisor™
- Q&A
- Thank you!



Introduction: Risk Adjustment Experts



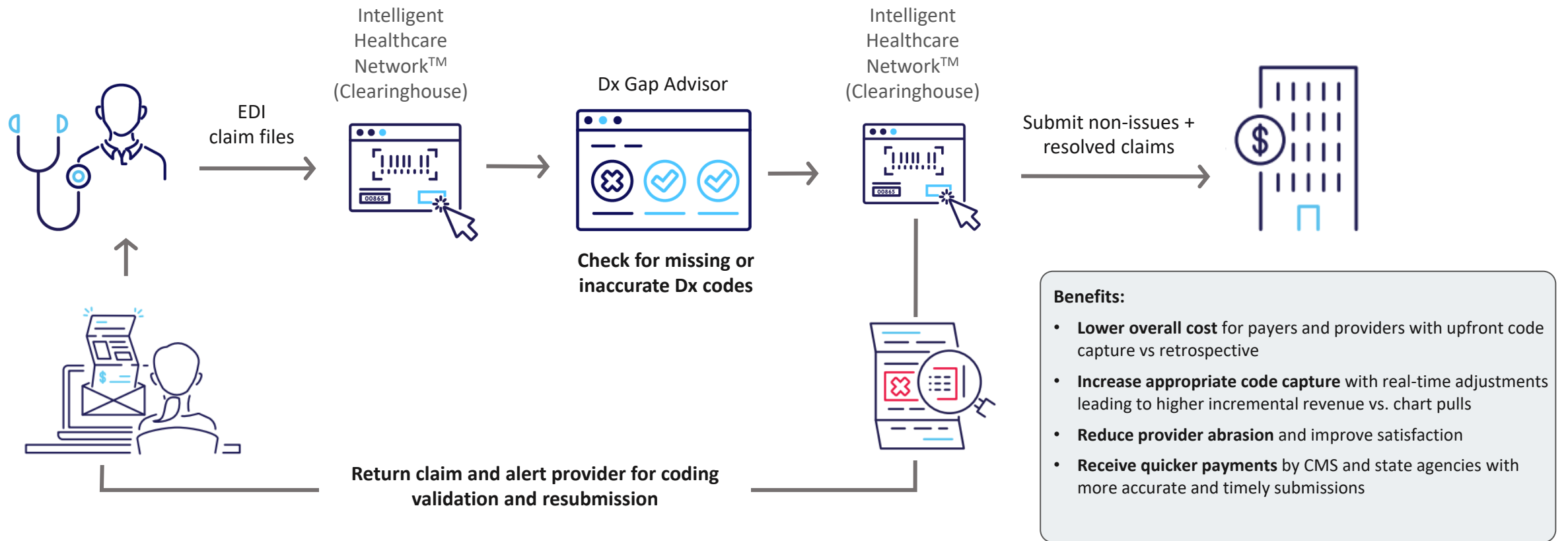
Jimmy Lui
VP, Product Strategy
Optum



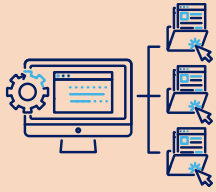
Jason Reed
Senior Director of Medicaid Risk
Adjustment
United Healthcare

Dx Gap Advisor™

Engages providers within their existing billing workflow to help achieve more complete and accurate diagnosis coding



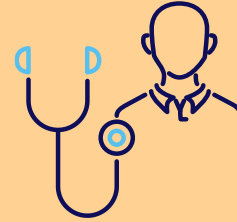
Close Gaps Prospectively



Professional Claims

message submitted through the Change Healthcare Clearinghouse

Up to **5 diagnosis codes** can be messaged per submitted claim.

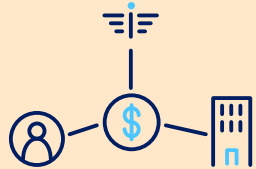


2 messages per month on average sent to participating providers



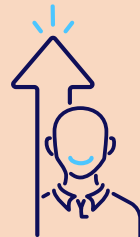
Engage

providers to improve coding.



100% of claims can be messaged if the plan is a CHC Managed Gateway client.

Messaging occurs **BEFORE** the payer receives the provider's claim.

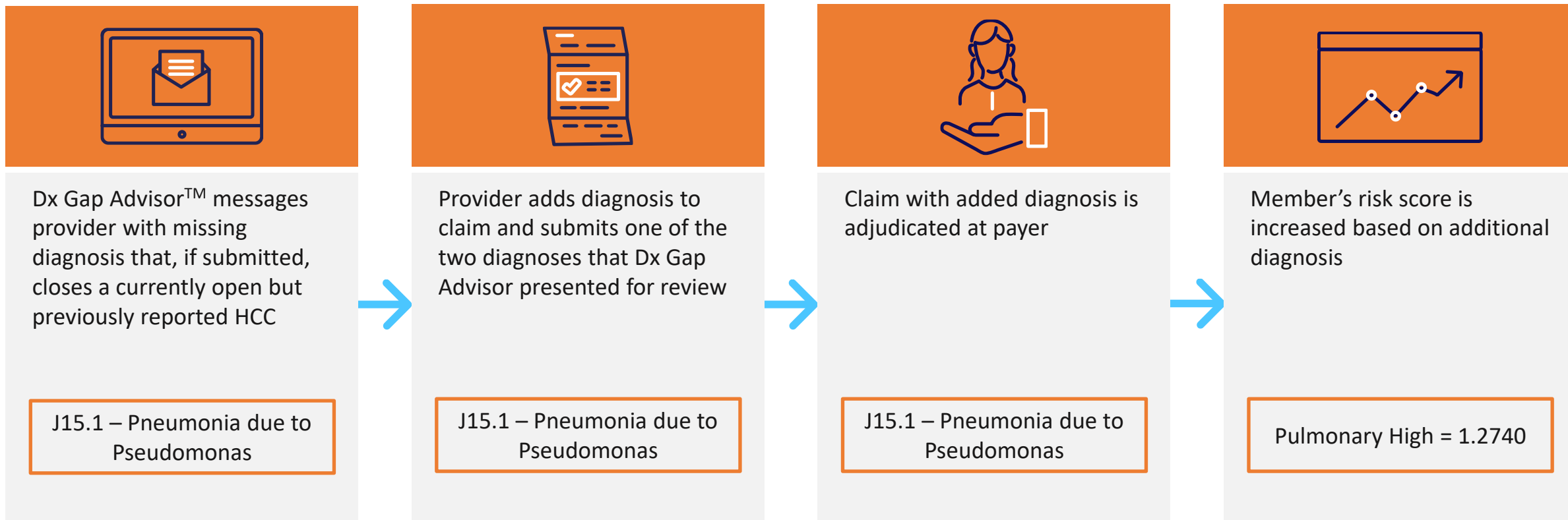


78 Taxonomy Codes messaged for PCPs



Receive money sooner from CMS by closing gaps during the year.

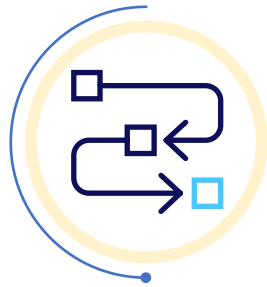
How Accurate Coding Improves Risk Score Accuracy



Enable Your Provider Network to Prospectively Close Risk Gaps Before Receiving Claims



More complete and **accurate provider coding**



Simple integration into provider's existing workflow



Faster reimbursements compared to conventional retro solutions



Low abrasion – Averages two messages per month per provider



Low risk – Only pay when claims are changed.



Less expensive than chart retrievals

Unresolved Risk Gaps Impact Your Reimbursement



Missed chronic conditions on submitted claims

20% of provider submitted claims are missing one or more chronic conditions that have been reported in the member's history but have not been reported in the current year.¹



Prospective gap closure results in receiving payments sooner.

Gaps closed prospectively result in receiving Medicare payments from CMS at least six months sooner than closing gaps on a retrospective basis.²



Costly chart retrievals to validate claims data

Validating chart data can cost payers \$300 per occurrence and requires frequent touchpoints between providers and payers.

Dx Gap Value



Chronic conditions flagged in EDI workflow allows providers to self-audit claims before submission and reduce resubmissions.



Identifying gaps earlier increases gap closures and expedites submissions and reimbursements.



Proactive messaging and outreach reduces unplanned phone calls and reliance on chart retrievals.

Closing risk gaps is 1.5x more expensive without Dx Gap.

Impacts All Lines of Business



Message risk gaps within the provider's existing workflow



Providers participate in auditing charts & claims submissions



Know what gaps have been closed before chart review



Health plans gains better understanding of provider coding performance and responsiveness

Use Dx Gap Advisor™ metrics in value-based payment, risk sharing, or alternative payment models

Commercial ACA and Dx Gap Advisor™

- Each gap closure is impactful as not many people have HCC (<30% of the population)
- Directly impacts the Funds Transfer Results in a positive way
- Shorter time to do chart reviews than other LOBs making closing prospectively valuable

Medicare and Dx Gap Advisor™

Get money sooner from CMS by closing gaps prospectively

Closing gaps results in more accurate risk scores

Helps provider performance at closing risk gaps

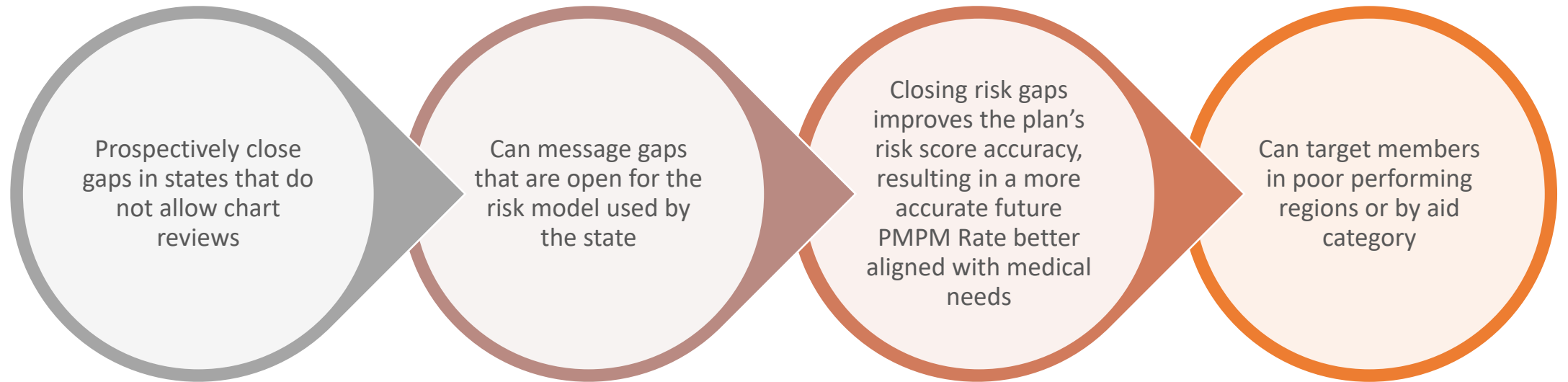
Engage Providers for accurate coding

Audit sampling to identify inaccurate coding

Education and Insight



Medicaid and Dx Gap Advisor™



Dx Gap Advisor™ Results with United Healthcare

Approximately 5,000 Providers in NY are participating since October 2022

60,000 claims have been messaged since October 2022

Mailed 28,742 Provider letters in NY for UHC

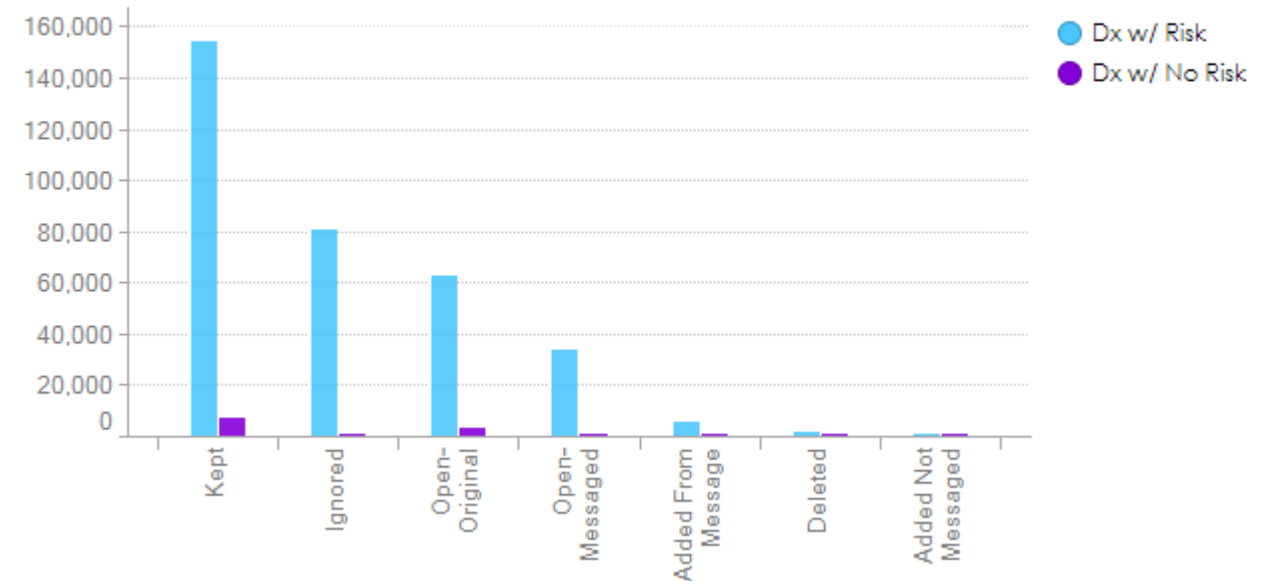
Dx Gap Advisor™ Results with United Healthcare

Top 10 Diagnosis Codes

E669 – Obesity, unspecified
E785 – Hyperlipidemia, unspecified
H40013 – Open angle with borderline findings, low risk
G8929 – Other chronic pain
K760 – Fatty (change of) liver, not elsewhere classified
E6601 – Morbid (severe) obesity due to excess calories
E782 – Mixed hyperlipidemia
J45909 – Unspecified asthma, uncomplicated
I340 – Nonrheumatic mitral (valve) insufficiency
M5412 – Radiculopathy, cervical region
H43393 – Other vitreous opacities, bilateral
E119 – Type 2 Diabetes mellitus without complications
G4733 – Obstructive sleep apnea (adult) (pediatric)
I739 – Peripheral Vascular disease, unspecified

Dx Gap With Risk Vs. Dx Gap With No Risk

Dx Breakdown by Status and Risk



Q & A



THE RISE
ASSOCIATION

THANK YOU

